

Customer :

customer

Customer part :

customer part

Comment :

Comment

S1=0.03

S2=0.1

Tmax=326

Tp S2=365.0

PI=0.21

HI=48

Sample =16488.5

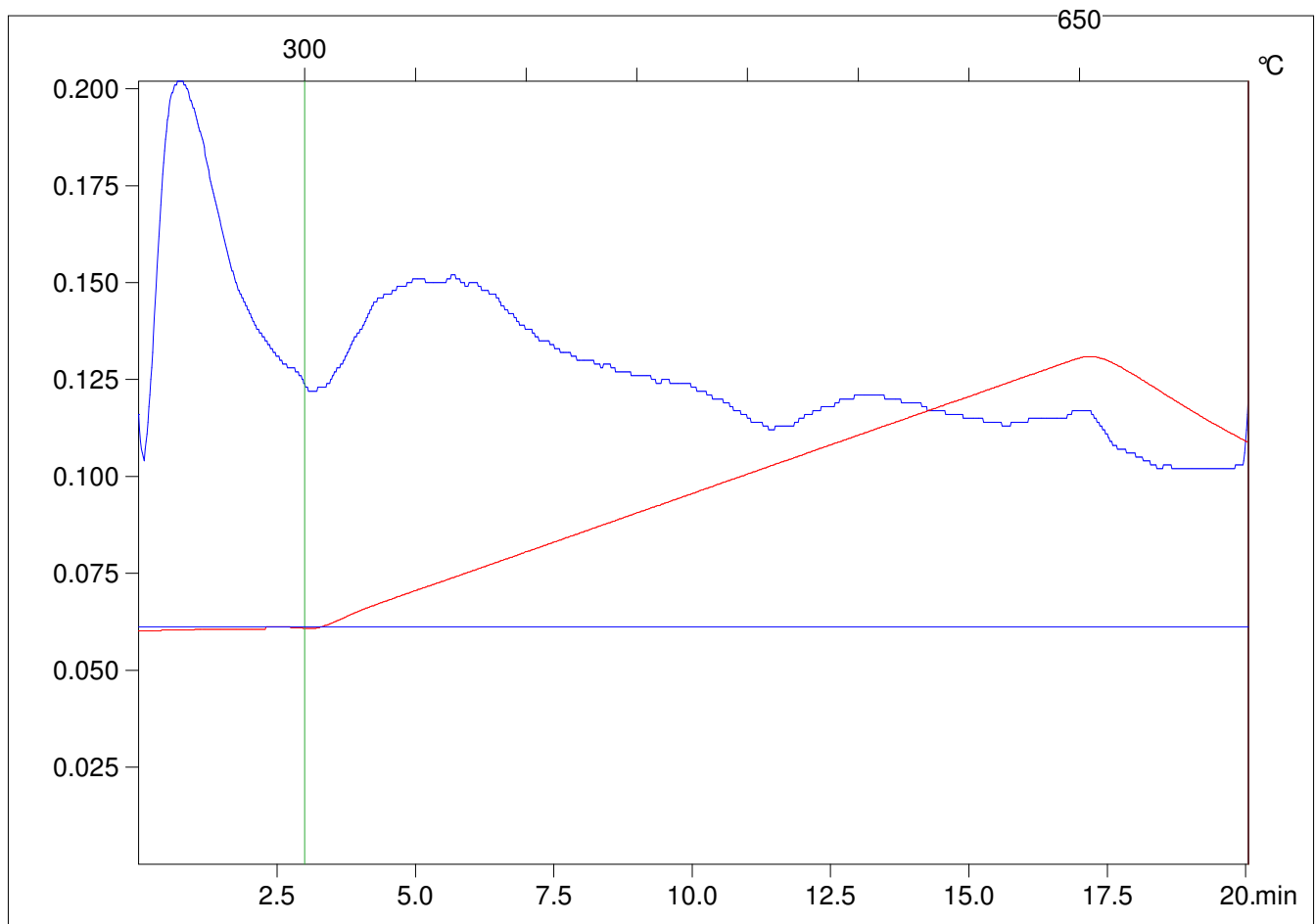
Method =Bulk Rock

Cycle=Basic

KFID(10*9)=1167

Qty =70.7

TOC=0.21



C:\VINC\PK141021\PK018.R00 : FID pyrolysis graphic

State

Pyro Status

Oxi Status